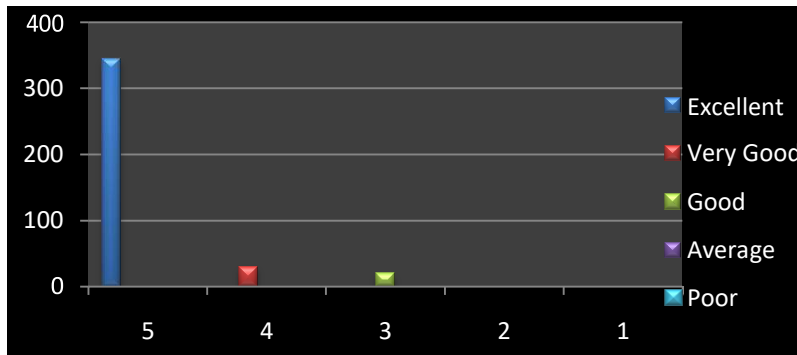


Student Feedback on Curriculum

395 respondents

1. Rate the course that you have studied in the previous semester.

આગલના શેમેસ્ટરમાં અભ્યાસ કરેલ અભ્યાસક્રમને મૂકો



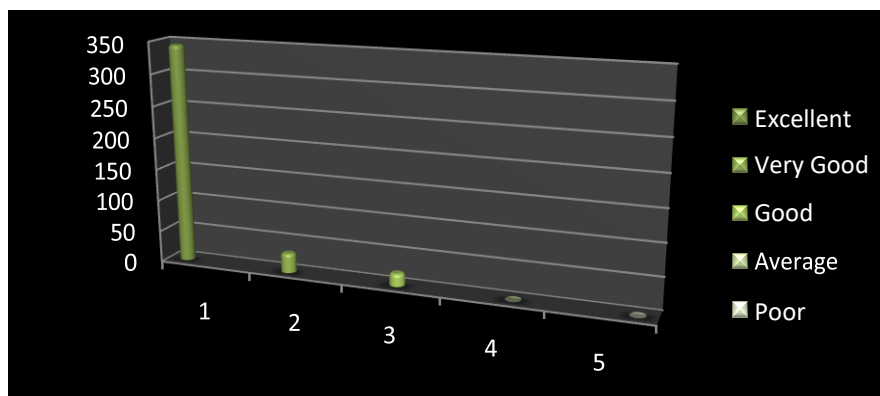
The chart displays the number of respondents. Approximately 87% of students rate the relevance of the units in Syllabus relevant to the course as excellent, while 7% rated it as very good. 5% percentage of students is just satisfied.

Action Taken:

The various Faculty members of the college participate in various University Syllabus Formation committees like Board of Studies, Academic Council etc and hence assist in the formation of the units into a meaningful curriculum.

2. Rate the relevance of the units in the course.

પર્યાપ્ત અભ્યાસક્રમના યુનિટ/પરિચયો નું મહત્વ મૂકો



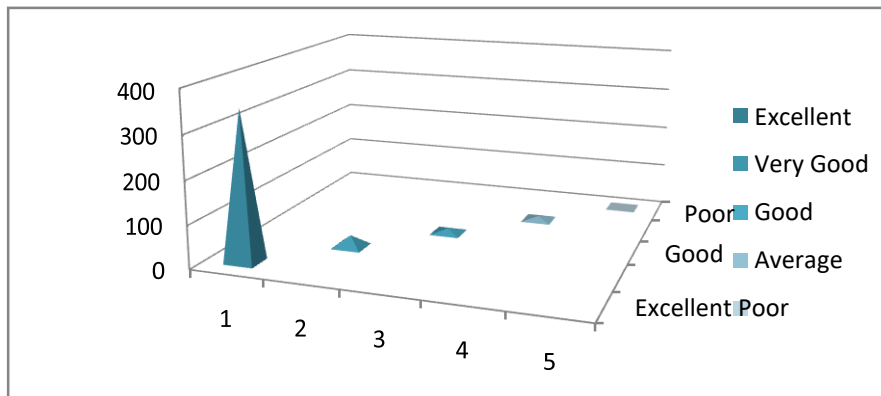
The chart displays the number of respondents. Approximately 87% of students rate the relevance of the units in Syllabus relevant to the course as excellent, while 7% rated it as very good. 5% percentage of students is satisfied.

Action Taken:

The various Faculty members of the college by active participation in various University Syllabus Formation committees like Board of Studies, Academic Council etc, try to form the units into a meaningful curriculum. The survey validates their attempts

3. Rate the gradation of the units in the course.

વર્તમાન અભ્યાસક્રમના યુનિટ/કરણો નો ક્રમ મૂકવો.

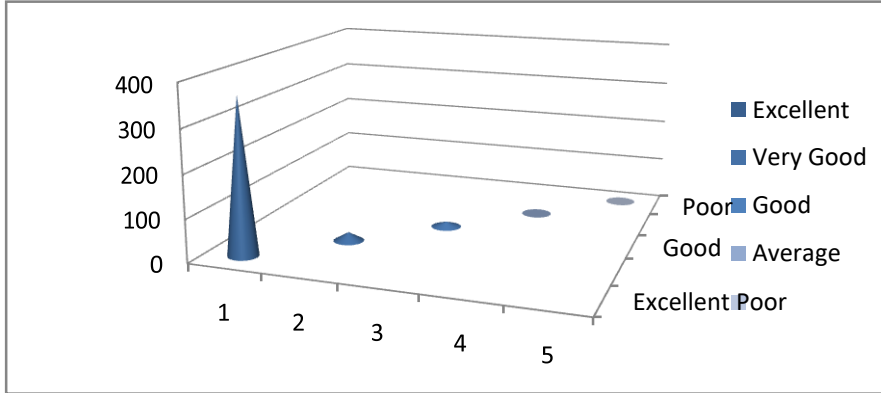


The chart displays the number of respondents. Approximately 88% of students rate the relevance of the units in Syllabus relevant to the course as excellent, while 7% rated it as very good. 2% percentages of students are satisfied. 2% of the students rated it as average

The College Faculty Members have requested the University to update the syllabus and make it more compatible to present needs

4. Rate the syllabus that you have studied in relation to the expected program outcome

નરનાન ડરિના અમેરિફેને ને પ્રાપ્ કરનામાં અભ્યાશકમ નુનાં મષત્ત મૂળો



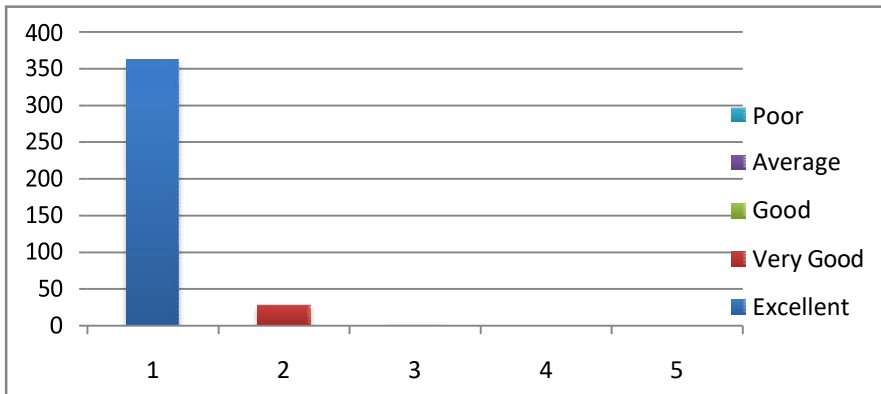
The chart displays the number of respondents. Approx. 97% of students rate the allocation of the credits to the courses as very good or excellent 3 % percentage of students are satisfied

Action Taken:

As per the UGC Guidelines and instructions, as a part of the University Statutory Bodies like BoS and AC, the college faculty members play a pivotal role in allocating appropriate credits to the courses. Students have responded positively to the question.

5. Rate the allocation of the credits to the course?

નરનાન અભ્યાશકમ ને યુનનશટીએ આે ક્ષેડિટ ગુણ રમને કેટના અંને યોગ્ય ાગ્યા



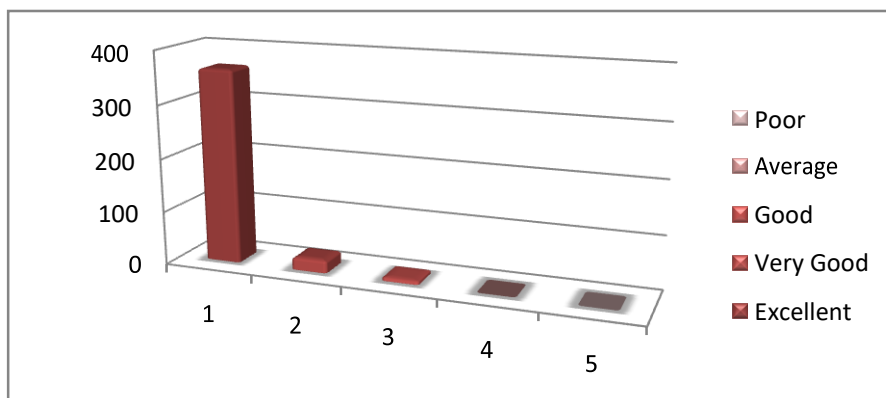
The chart displays the number of respondents. Appox. 99% of students rate the distribution of the contact hours among the course components (L-T-P) as very good or excellent. 1 % percentage of students is satisfied.

Action Taken:

As per the UGC and University Guidelines, the College Time-table Committee and the teaching staff plan Teaching Work distribution in such a way so as to distribute the contact hours of the course to justify the teaching-learning process.

6. Rate the distribution of the contact hours among the course components.

પરિભાજન અભ્યાશક્રમમાં યુનિવર્સિટી પ્રકરણોને આપેલ અભ્યાશ કલાકોની વિષેની રૂમને કંઈક અંશે યોગ્ય ઠાવ્યા

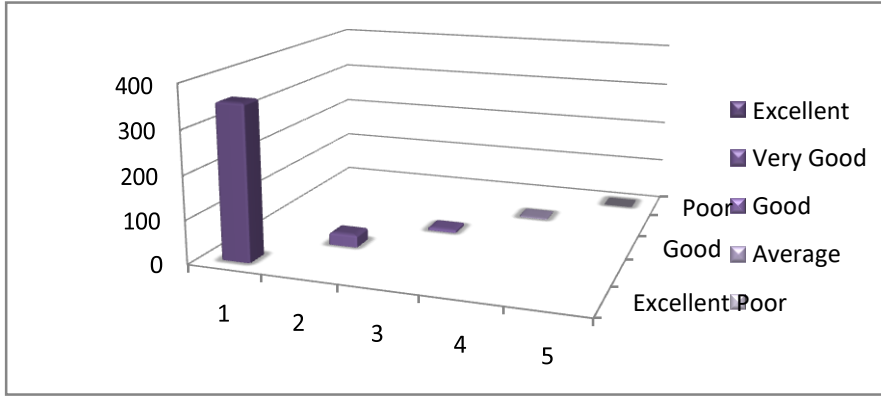


The chart displays the number of respondents. Appox. 98 of students rate the offering of the electives in terms of their relevance to the specialization streams as very good or excellent, 2 % percentage of students are satisfied

The subject groups offered by the college complement each other to make the course a unified educational experience for students.

7. Rate the offering of the electives in terms of their relevance to the main subject.

ગરુભાન અભ્યાશક્રમમાં આપેલ પ્રથમ અને નવભરૂીય ગોણા નળવયોનુાં મષત્ળ મુખ્ય નળવયના શાપે િ માંાં ર્મને કેટલાઅંપેયોગ્ય ાગ્યા

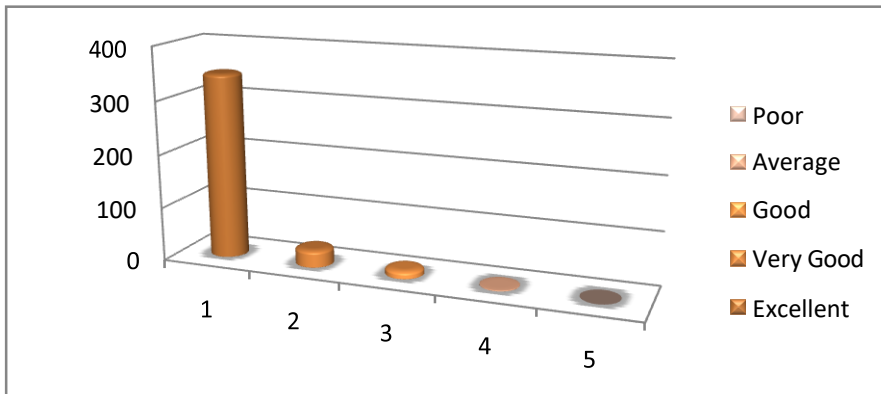


The chart displays the number of respondents. Appox. 90% of students rate the Size of syllabus in terms of the load on the student excellent. 7 % percentage of students rated it as very good while 2% are satisfied and rest of students, only 1% say that the Size of syllabus in terms of the load on the student needs improvement.

Considering the implementation of the CBCS by the University and Education Dept. of Govt of Gujarat from 2010 onwards, through a healthy participation in University BoS and AC, the college has contributed in sizing the syllabus load appropriate to average students.

8. Do the text books and reference books in the library have national / international standards?

ગરુભાન અભ્યાશક્રમને ાગરૂા ાઈબૂેરીમાંાં ઉપપૂધ ાઠ્ય ાુસૂરૂકો અને શાંરૂત ગૂાંયો ાાુાંણીય /આંરૂરાણીય સૂરૂના છે



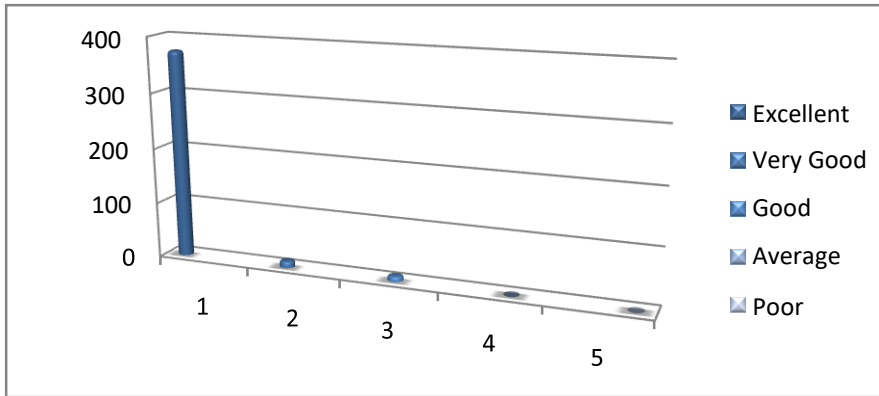
The chart displays the number of respondents. Appox. 96% of students feel that books in the library bear national or international standards in relevant subjects. 3% of the respondents were satisfied while only 1% said it was average.

Action Taken:

The library committee in consultation with the departments orders relevant books and reading material for the library.

9. Have you obtained sufficient technical and other knowhow to support Academic understanding?

રૂમને પૈકિણીક શમજ કલેળળામ્લાં યાંકિક કે અન્ય શળર્ો પૂરૂી છે



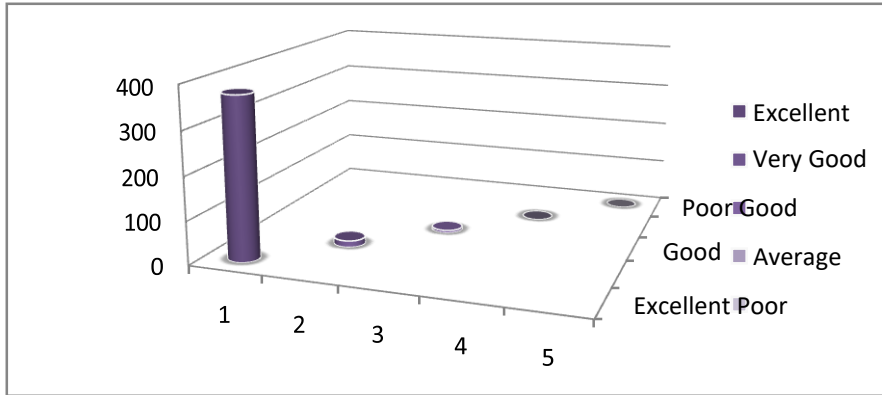
The chart displays the number of respondents. Appox. 98% of students respond with Excellent or Very Good. Remaining 2% of students expressed satisfaction.

Action Taken:

The College has an M O U with DOT technologies Gandhinagar and hence students are acquainted with basic technology for educational purpose. All students have been provided tablets for educational use.

10. How do you Rate the combination of courses.

ળર્માન શેમેસ્ટર નુાં અભ્યાશમ નળવય જુથ કળુાં પાપ્યુાં

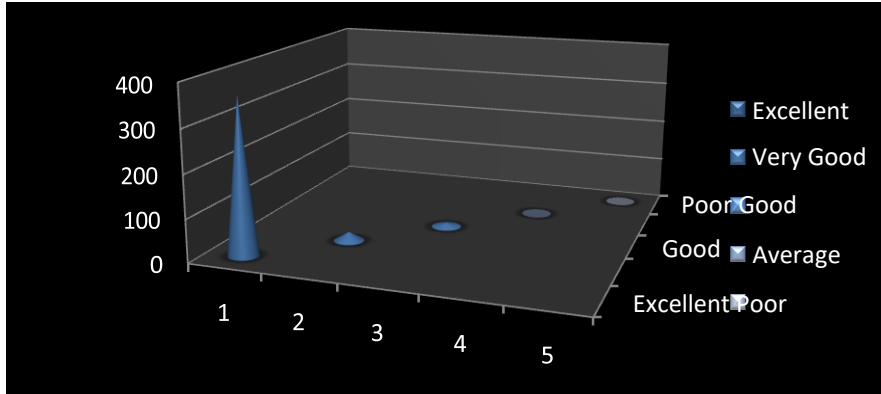


The chart displays the number of respondents. Appox. 99% of students rate the combination of courses offered by the institution as excellent or very good. Remaining 1% expressed satisfaction by rating it as good.

This is the only college in the entire district that offers the combination of three languages as main subjects with Psychology as a subsidiary.

11. How do you rate the Programme in relation to the real life applications?

આપના અભ્યાસક્રમનું ગણતરીતી જીવનમાં કેટલાં મહત્ત્વ છે



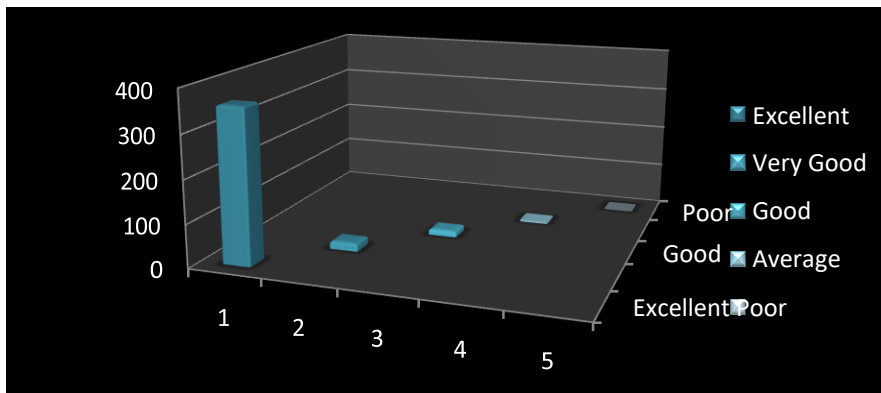
The chart displays the number of respondents. Appox. 98% of students rate it as very good or excellent. Remaining 2% expressed satisfaction with the programme and its relevance to real life applications.

Action Taken:

Teaching learning methods and material are discussed with reference to real life situations in the class.

12. Is the education imparted at Smt.R.R.H.Patel MahilaArtsCollege,Vijapuruseful and relevant in your day to day life?

આપની કોણેજમ્માં આપળામ્માં આળર્ા ન્ણિણનો ઉપયોગ અને રોજ્ંદા જીળન મધ્ળ મૂળ્ળો



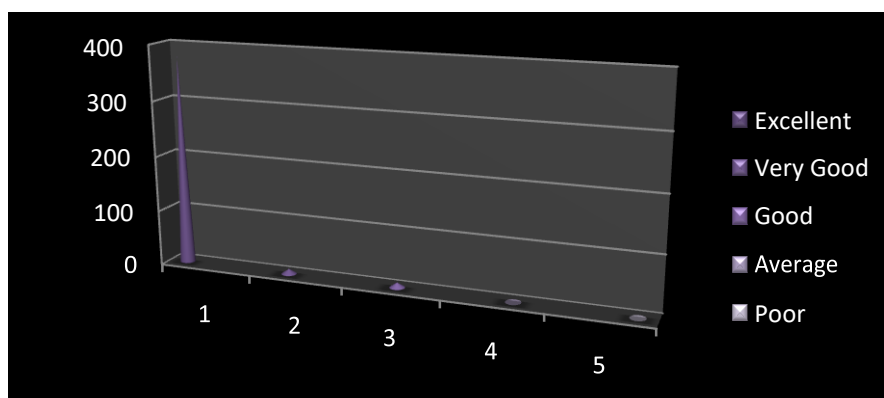
The chart displays the number of respondents. Appox. 96% of students responded with Excellent or very good. 2% respondents feel satisfied while only 1% feel it requires improvement.

Action Taken:

The College has a Language Laboratory for SCOPE, a Govt. of Gujarat initiative for English Language Proficiency. Certificate course with stipend and add on courses in four subjects have been added. Students also gain soft skills and basic computer literacy in the college.

13. Rate encouragement to participate in various activities.

કુલ નળ્યાથીઓને પ્રત્યક્ષ ઓમોલો રંગો મોટે કૂરકુલો પ્રોશોષન આપોમોલો આલે છે



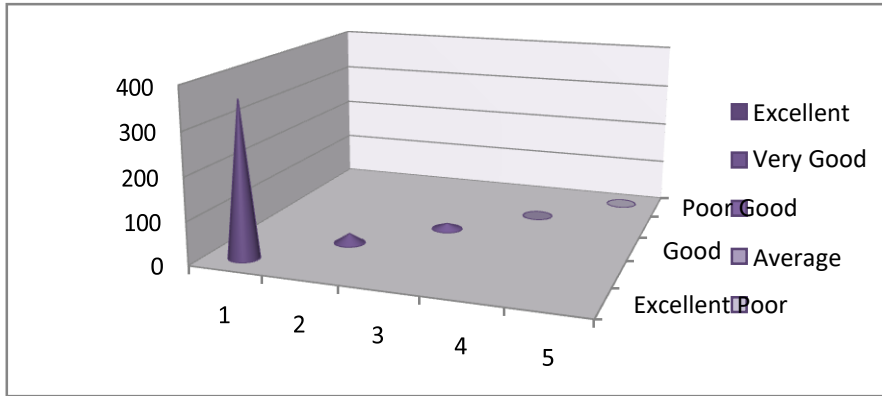
The chart displays the number of respondents. Appox. 98% of students rate their experience of participating in various activities as excellent or very good. Remaining 2% rated it as Good.

Action Taken:

Each student has to opt for at least one stream of activities out of the seven streams. NSS, Excursions, student exchange are some of the activities that students participate in the college.

14. Does the syllabus enhance employability and professional attitude?

અભ્યાશકમ રોજગારપરિરો અને વ્યવશાયક અનરુગમમોલો ણધારો કરે છે?

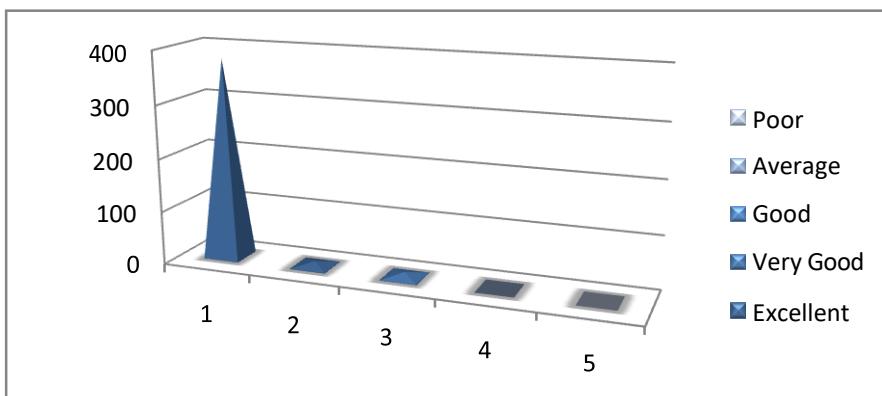


The chart displays the number of respondents. Approximately 97% of students rate their experience as Excellent or very good. Remaining 3% respondents were satisfied.

College arranges skill development, adds on courses and exemplifies real life experiences through the participation of students in various activities.

15. Howfarthe Facilities in your college, helpful in development soft skills.

કોલેજમાં આપેલી સગવડો મારા માટે ઉચ્ચ અભ્યાસિક શક્તિઓ કોલેજમાં વિકસાવવામાં મદદ કરે છે



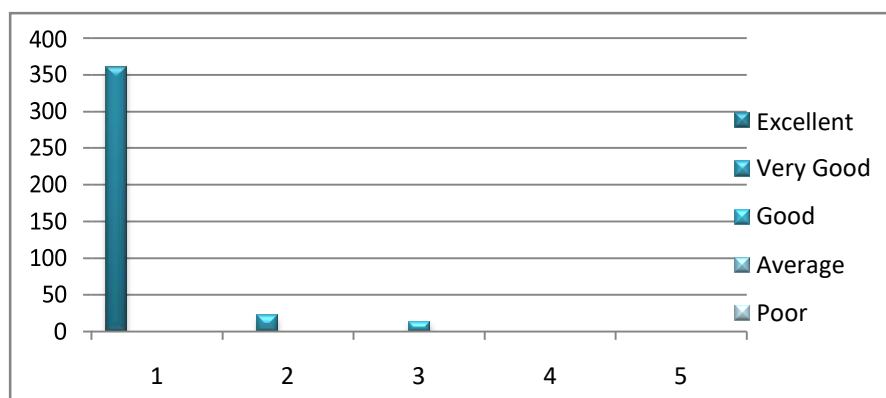
The chart displays the number of respondents. Appox. 98% of students rate their experience of developing soft skills through various activities as excellent or very good. Remaining 2% rated it as Good.

Action Taken:

Each student has to opt for at least one stream of activities out of the seven streams. NSS, Excursions, student exchange are some of the activities that students participate in the college. Sewing, Beauty and Hair treatment, Handicraft training etc have been initiated as certificate courses. Soft skills are also developed through participation in debates, elocution, essay writing, recitations, Mahendi, Hair styling, rangoli, recipe making competitions.

16. Does the course/ syllabus address to cross cutting issues such as environment, gender, and human rights?

કુર્ાં ણરુનમ્ાન અભ્યાશમ રુદ્કાનન મુદ્ાઓ જ્ેળાકે ણયાભરણુજાનરુ અને માનળ અનધકારોને ન્યાય આપે છે?



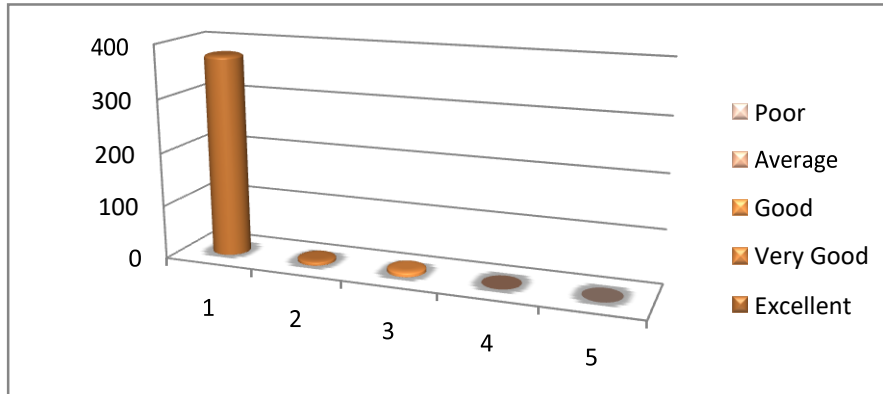
The chart displays the number of respondents. Approximately 96% students feel that the course/syllabus addresses cross cutting issues like environment, gender and human rights. 3% responded with good and only 1% thought it needed improvement.

Action Taken:

Cross cutting issues are discussed in the class room while dealing with the prescribed syllabus. Lectures on gender and environmental issues are arranged. N S S and other excursion programmes are implemented with the support of the environment Committee.

17. Has the placement cell provided sufficient information and assistance for on campus and off campus placement opportunities?

પ્રુાં આાની કોેજમાંાં પ્ેશમેન્ટ શેે કેમે્શમાંાં અને કેમે્શ બષાર ઠૂરરી ર્કો નળવે માનષર્ી આે છે



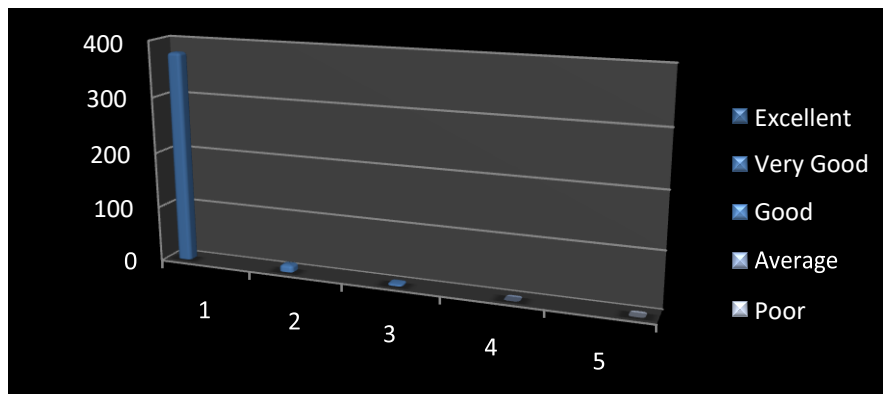
The chart displays the number of respondents. Appox. 97% of students feel that the placement cell provided sufficient information and assistance for on campus and off campus placement opportunities

Action Taken:

Students are informed about the placement opportunities through relevant newspapers and magazines in the library. The students are also taken for job fairs. Relevant lectures and workshops are arranged. Placement cell and Udisha Club of the college also conduct industrial and market survey for job opportunities.

18. Are Aims and objectives of the syllabus well defined and clear to teachers and students?

પ્રુાં ણર્માન અભ્યાશકમના ષેરુઓ અને ઉદ્ેો નેકો અને નળ્યાથીઓમાંાં યોગ્ય રીરે સ્પષ્ટ કરેે છે



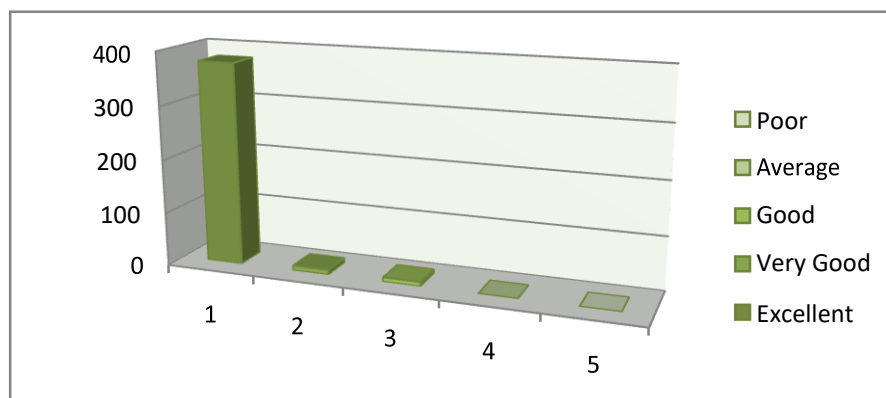
The chart displays the number of respondents. Approximately 99% of students feel that aims and objectives of the syllabus are well defined and clear to teachers and students. 1% student's rate is as good.

Action Taken:

Programme objectives, Programme Specific Objectives, and Course Objectives are well defined and shared with the students. It is also available on the college website.

19. Is syllabus need based?

અભ્યાસક્રમ જરૂરયાત્મક રીતે છે



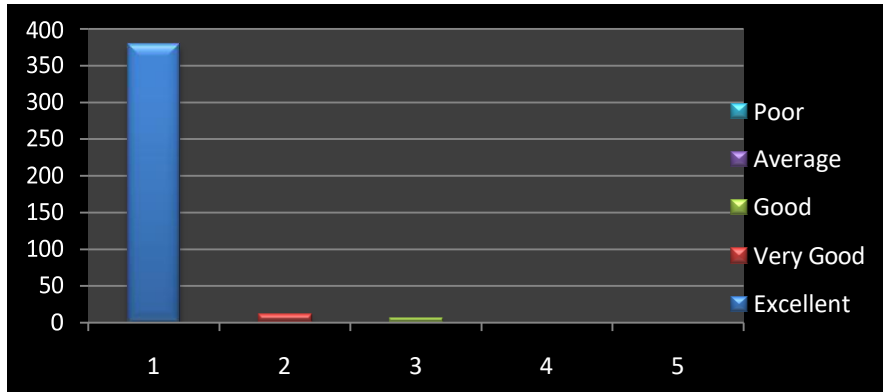
The chart displays the number of respondents. Approximately 98% of students feel that the syllabus is need based. 2% students rate it as good.

Action Taken:

Apart from the syllabus prescribed by the affiliating Hemchandracharya North Gujarat University Patan, the college has started need based certificate courses.

20. Doestheinstitutehavefacilitiesforsportsandculturalactivities?

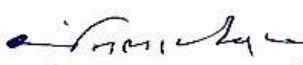
શાલિયા રમરુ-ગમરુ અને શાલિયાકનરુક પુણત િઓ માટે શગળિો ધરાળે છે?



The chart displays the number of respondents. Approximately 99% of students feel the institute possesses adequate facilities for sports and cultural activities. Remaining 1% respondents also feel that the facilities are good.

Action Taken:

The College has a big playground for outdoor sports. Inter class, inter college sports are organized here. The college also has newly constructed sports facilities for indoor games. Students from the college have participated in various sports events and represented the college and university at different platforms.


Trustee
ASH EDUCATION TRUST
At. Vijapur, Di. Mehsana


Principal
Smt. R. R. H. Patel
Mahila Arts College
At. Vijapur, Dist. Mehsana.